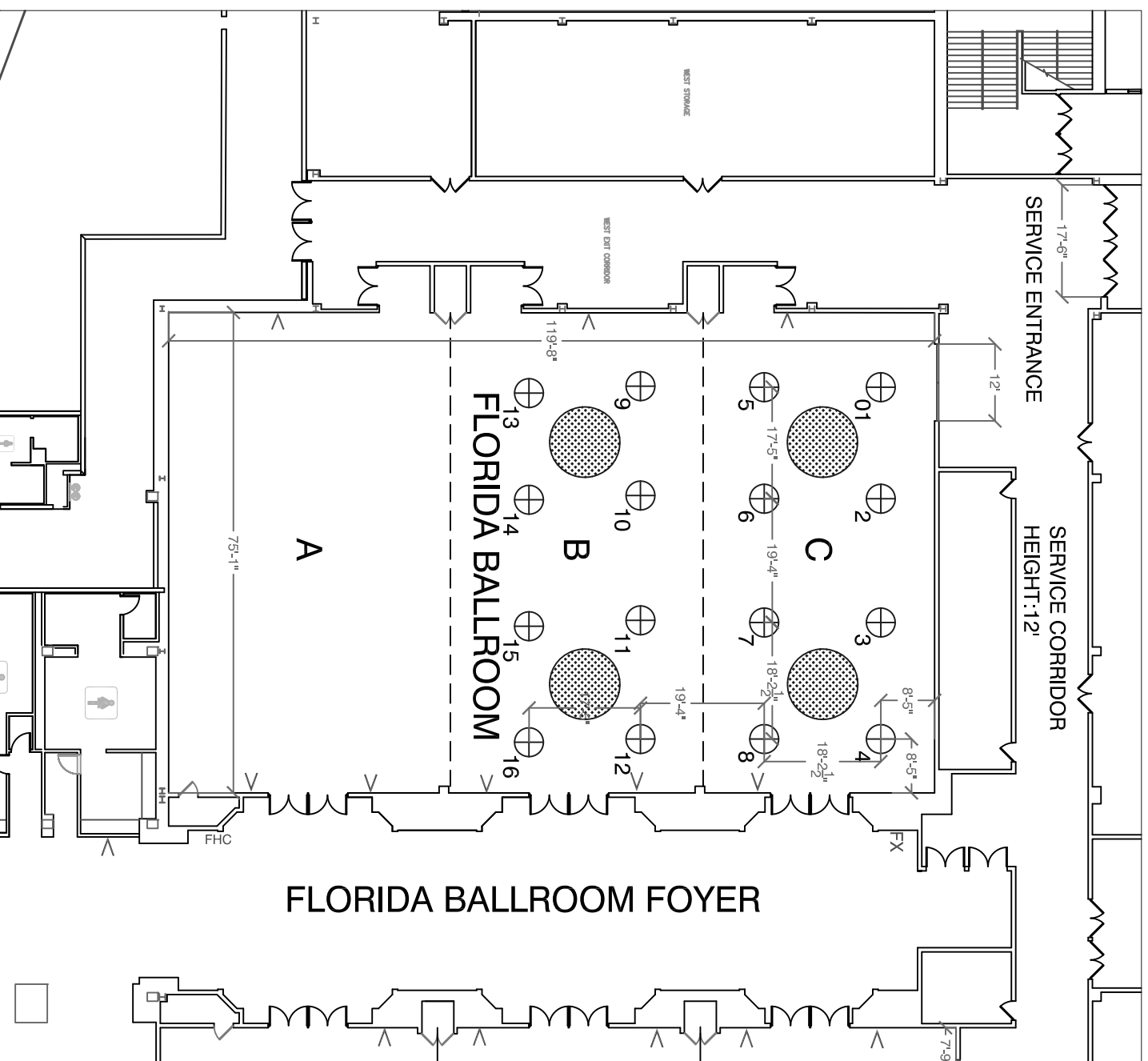


PEABODY FLORIDA BALLROOM



LEGEND	
FIRE HOSE CABINET	FHC
FIRE ALARM STROBE	>
COLUMNS	□
FIRE EXTINGUISHER	FX
CEILING RIG POINTS (MAX LOAD: 1000 LBS PER POINT) (NUMBER OF MAX LOADS: 4000 PER TRUSS)	⊕ xx
CHANDELIER	⊙

FLORIDA BALLROOM DIMENSIONS

FLORIDA BALLROOM:	119' X 73'
BALLROOM A:	44' 4" X 73'
BALLROOM B:	39' 6" X 73'
BALLROOM C:	32' 6" X 73'
CEILING HEIGHT:	16' 6"
CHANDELIER HEIGHT:	11' 6"
COFFER HEIGHT:	13' 9"